

PRELUDE® XL® and PRELUDE XL High Recycled Content (HRC) 15/16" Exposed Tee System



UP TO **63%** RECYCLED CONTENT
armstrong.com/greengenie

LEED®

waste mgmt
recycled content
local materials

*LOCATION DEPENDENT



KEY SELECTION ATTRIBUTES

- **Seismic Rx®** Suspension System saves time and money; Armstrong offers an ICC-ES approach to installations (ESR-1308)
- **PeakForm®** profile increases strength and stability for improved performance during installation
- **SuperLock™** main beam clip is engineered for a strong, secure connection and fast accurate alignment confirmed with an audible click; easy to remove/relocate
- Hot dipped galvanized coating inhibits red rusting better than electrogalvanized or painted systems
- 10-Year Limited System Warranty; 30-Year Limited Ceiling Systems Warranty when used with **HumiGuard® Plus** products
- **FastSize™** main beams and cross tees can be ordered with special sizing and route spacing for your project needs in one carton minimums with two week lead times
- Rotary-stitched during manufacture for additional torsional strength and extra stability during installation
- XL² staked-on end detail provides secure locked connection; easy to remove, reuse, and relocate
- Fire Guard™ options offer UL design fire-rated performance
- Some items available in metric sizes

TYPICAL APPLICATIONS

- Retail
 - Offices
 - Education
 - Hospitality
 - Healthcare
- Blizzard White powder-coated finish coordinates with Optima®, Ultima®, Calla™, and Lyra™ ceiling panels for a clean, seamless, monolithic installed visual.

VISUAL SELECTION

PERFORMANCE

Item No.*	Face Profile	Description	Dimensions (Inches)	Route Spacing	Load Test Data (Lbs./Lin. Ft.)		Fire Guard™	Seismic Category	Packaging	
					L/360	L/240			Pcs./ Ctn.	Lin. Ft./ Ctn.
Prelude XL (Red Numbers are Fire Guard Items)					4 Ft.	5 Ft.	Dots represent high level of performance.			
□ 7301_ _ ♦							–	•	20	240
□ 7301HRC	15/16"	12' HD Main Beam	144 x 15/16 x 1-11/16"	6" O.C.	16.73	8.73	–	•	20	240
□ 8301							•	•	20	240
□ 7300_ _ ♦							–	–	20	240
□ 8300_ _ ♦	15/16"	12' ID Main Beam	144 x 15/16 x 1-11/16"	6" O.C.	13.5	6.35	•	–	20	240
□ 7305_ _ ♦	15/16"	140" HD Main Beam	140 x 15/16 x 1-11/16"	10" O.C.	10.73	8.73	–	–	20	233
□ 7306_ _ ♦	15/16"	132" HD Main Beam	132 x 15/16 x 1-11/16"	10", 30", 50", 56", 76", 96", 116", 122"	16.73	8.73	–	•	20	220
□ 7307_ _ ♦	15/16"	126" HD Main Beam	126 x 15/16 x 1-11/16"	10", 30", 50", 70", 90", 110", 116"	–	–	–	•	20	210
□ 7302_ _ ♦	15/16"	10' ID Main Beam	120 x 15/16 x 1-11/16"	6" O.C.	13.5	6.35	–	–	20	200
□ XL7380_ _ ♦	15/16"	8' Cross Tee	96 x 15/16 x 1-11/16"	12" O.C.	12.12**	–	–	•	20	160
□ XL7390_ _ ♦	15/16"	6' Cross Tee	72 x 15/16 x 1-11/16"	12" O.C.	12.24*	–	–	•	20	120
□ XL7357_ _ ♦	15/16"	5' Cross Tee	60 x 15/16 x 1-11/16"	6" O.C.	–	7.61	–	•	60	300
□ XL7358_ _ ♦	15/16"	5' Cross Tee	60 x 15/16 x 1-11/16"	20" O.C.	–	7.61	–	•	60	300
□ XL7341_ _ ♦							–	•	60	240
□ XL7341HRC	15/16"	4' Cross Tee	48 x 15/16 x 1-11/16"	12" O.C.	16.89	–	–	•	60	240
□ XL8341							•	•	60	240
□ XL7340_ _ ♦							–	•	60	240
□ XL8340_ _ ♦	15/16"	4' Cross Tee	48 x 15/16 x 1-11/16"	12" O.C.	12.25	–	•	•	60	240
□ XL7342_ _ ♦	15/16"	4' Cross Tee	48 x 15/16 x 1-1/2"	12" O.C.	7.8	–	–	•	60	240
□ XL7348_ _ ♦	15/16"	4' Cross Tee	48 x 15/16 x 1-3/8"	12" .	6.78	–	–	•	60	240
□ XL7330_ _ ♦	15/16"	3' Cross Tee	36 x 15/16 x 1-11/16"	–	20.3 @ 3'	–	–	•	60	180
□ XL7378_ _ ♦	15/16"	30" Cross Tee	30 x 15/16 x 1-3/8"	–	16.54 @ 2.5'	–	–	•	60	150
□ XL7328_ _ ♦							–	•	60	120
□ XL8323_ _ ♦	15/16"	2' Cross Tee	24 x 15/16 x 1-3/8"	–	36.0 @ 2'	–	•	•	60	120
□ XL8320HRC	15/16"	2' Cross Tee	24 x 15/16 x 1-11/16"	–	61.33 @ 2'	–	–	•	60	120
□ XL8320							•	•	60	120
□ XL7368_ _ ♦	15/16"	20" Cross Tee	20 x 15/16 x 1-3/8"	–	36.0 @ 1.67'	–	–	•	60	100
□ XL7398_ _ ♦	15/16"	18" Cross Tee	18 x 15/16 x 1-3/8"	–	–	–	–	•	60	90
□ XL7318_ _ ♦	15/16"	1' Cross Tee	12 x 15/16 x 1-3/8"	–	36.0 @ 1'	–	–	•	120	120
□ FastSize™	15/16"	Main beams L: 36" - 144" / Cross tees L: 6" - 144" / Route spacing 3" from ends, 6" thereafter					–	•	Varies	Varies

* Simple Span
 ** Hanger Wire Support Mid-Span
 ♦ Items available in Standard, Premium, Wood Look, and Blizzard White powder-coated finish
 ♦ Items available in Blizzard White powder-coated finish only
 When specifying or ordering items with a color or finish, add the two-letter suffix to the end of the item number (e.g., 7301HA – Haze)

NOTE: Additional Prelude XL items for TechZone™ Ceiling Systems are listed in the TechZone Technical Guide (BPCS-4486). Available online at armstrong.com/techzone



PRELUDE® XL® and PRELUDE XL High Recycled Content (HRC) 15/16" Exposed Tee System

VISUAL SELECTION

PACKAGING

Item No.♦	Description	Length	(A) Flange	(B) Flange	(C) Flange	Pcs./ Ctn.	Lin. Ft./ Ctn.
Suggested Wall Moldings and Shadow Moldings							
<input type="checkbox"/> 7800_♦ <input type="checkbox"/> 7800HRC	12' Hemmed Angle Molding	144"	7/8"	7/8"	–	30	360
<input type="checkbox"/> 7808_♦	10' Hemmed Angle Molding	120"	2"	2"	–	10	100
<input type="checkbox"/> 780812_♦	12' Hemmed Angle Molding	144"	2"	2"	–	10	120
<input type="checkbox"/> 7807	10' Hemmed Angle Molding	120"	2"	1"	–	10	100
<input type="checkbox"/> 7875_♦	10' Shadow Molding	120"	3/4"	15/16"	1/2"	30	300
<input type="checkbox"/> 7877_♦***	10' Shadow Molding	120"	15/16"	15/16"	1/4"	30	300
<input type="checkbox"/> 7878_♦***	10' Shadow Molding	120"	15/16"	15/16"	3/8"	30	300
<input type="checkbox"/> 7897_♦***	10' Shadow Molding	120"	15/16"	15/16"	1/2"	30	300

*** Suitable for IBC Category D,E,F installations using Armstrong Seismic Rx® and BERC2 Clip
 ♦ Items available in Standard, Premium, Wood Look, and Blizzard White powder-coated finish
 ♦ Items available in Blizzard White powder-coated finish only
 When specifying or ordering items with a color or finish, add the two-letter suffix to the end of the item number (e.g., 7301HA – Haze)

MAXIMUM FIXTURE WEIGHT

Configuration		Item No.	Fixture		Planning Module		Hanger Spacing		Maximum Weight	
A	B		A	B	A	B	A	B	A	B
Main Beam to Main Beam – Drawing Key: Main beam (↑) Cross tee (–) Hanger wire (↕)										
		7300/8300/7302 7301/8301	24" x 48"	24" x 48"	48" x 48"	48" x 48"	48"	48"	69.27 lbs.	49.27 lbs.
			24" x 48"	24" x 48"	48" x 48"	48" x 48"	48"	48"	72.32 lbs.	72.32 lbs.
		7300/8300/7302 7301/8301	12" x 48"	12" x 48"	48" x 48"	48" x 48"	48"	48"	54.26 lbs.	47.17 lbs.
			12" x 48"	12" x 48"	48" x 48"	48" x 48"	48"	48"	100.0 lbs.	63.32 lbs.
		7300/8300/7305 7301/8301	24" x 48"	20" x 60"	60" x 60"	60" x 60"	48"	48"	56.47 lbs.	43.21 lbs.
			24" x 48"	20" x 60"	60" x 60"	60" x 60"	48"	48"	56.47 lbs.	65.46 lbs.

Main beams tested as follows: 7300 tested at 13.0 lbs./LF to 1/360 of 4' span; 7301 tested at 16.5 lbs./LF to 1/360 of 4' span.

Cross Tee to Cross Tee – Drawing Key: Main beam (↑) Cross tee (–) Hanger wire (↕)

		XL8340/XL7340 XL7342 XL8341/XL7341	24" x 48"	24" x 24"	64" x 60"	48" x 48"	48"	48"	69.27 lbs.	80.55 lbs.
			24" x 48"	24" x 24"	64" x 60"	48" x 48"	48"	48"	40.89 lbs.	52.26 lbs.
			24" x 48"	24" x 24"	64" x 60"	48" x 48"	48"	48"	81.67 lbs.	100.0 lbs.
		XL8340/XL7340 XL8341/XL7341	24" x 48"	12" x 48"	48" x 48"	48" x 48"	48"	48"	49.27 lbs.	42.17 lbs.
			24" x 48"	12" x 48"	48" x 48"	48" x 48"	48"	48"	72.32 lbs.	63.32 lbs.

Fixtures weighing more than 56 lbs. should be independently supported. Fixture weight is based on single fixture only. For end-to-end fixtures or other configurations not shown, consult your Armstrong representative.
 NOTE: The above data is based on 48" hanger wire spacing, board weight of 1 lb./SF, maximum deflection of tees not to exceed 1/360 of the span, and suspension system installed in accordance with ASTM C636.

PRELUDE® XL® and PRELUDE XL High Recycled Content (HRC) 15/16" Exposed Tee System

COLOR AND FINISH SELECTION

Standard



Premium



Powder-coated Finish*



Wood Look Finishes



†† Capping only

††† Peel-off protective film on exposed surfaces to protect from scuffing or marking during installation

NOTE: Items 8300, XL8340, XL8323 available in Black (BL) or White (WH) only.

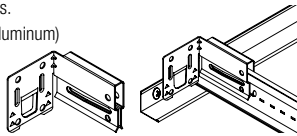
* Items available in powder-coated finish

When specifying or ordering items with a color or finish, add the two-letter suffix to the end of the item number (e.g., 7301HA – Haze)

ACCESSORIES

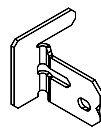
BERC2 – 2" Beam End Retaining Clip – Allows you to create a code compliant Seismic D, E, F ceiling installation while eliminating the need to use 2" wall molding or spreader bars.

ALBERC2 (aluminum)



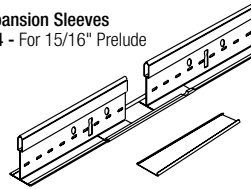
200 pcs/bucket

STAC – Single Tee Adapter Clip – Used to create code compliant non-seismic and seismic C and D, E, F off-module main beam to cross tee connections.



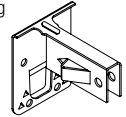
120 pcs/bucket

Expansion Sleeves
ES4 - For 15/16" Prelude



200 pcs/bucket

GCWA – Grip Clip Wall Attachment – Joins main beam or cross tee to wall molding via locking bars without pop rivets or screws.

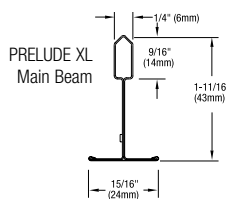


250 pcs/bucket

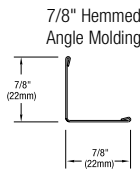
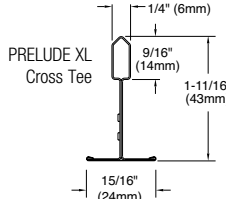
DETAILS



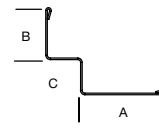
PRELUDE XL Main Beam



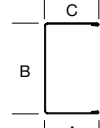
PRELUDE XL Cross Tee



Shadow Molding



Channel Molding



SEISMIC PERFORMANCE

Main Beams

7301, 7301HRC, 7306, 7307, 8301

Minimum Lbs. To Pull Out Compression/Tension

335.0

330.0

Cross Tees

All XL cross tees exceed 300 lbs. in both compression and tension.

ICC Reports

For areas under ICC jurisdiction, see ICC evaluation report number ESR-1289 for allowable values and/or conditions of use concerning the suspension system components listed on this page. The report is subject to reexamination, revisions, and possible cancellation.

PHYSICAL DATA

Material

Hot dipped galvanized steel

Surface Finish

Baked polyester paint or powder coated

Face Dimension

15/16"

Profile

Exposed tee

Cross Tee/Main Beam Interface

Override

End Detail

Main Beam: Staked-on clip

Cross Tee: Staked-on clip

Duty Classification

Intermediate or Heavy-duty



PRELUDE® XL® and PRELUDE XL High Recycled Content (HRC) Blizzard White – Powder-coated Finish



Optima® Tegular 24" x 72" with Interlude® suspension system featuring Blizzard White powder-coated finish

NOW AVAILABLE – BLIZZARD WHITE POWDER-COATED FINISH

- Choose the new Blizzard White powder coated finish for a clean, monolithic installed visual that looks great with Optima, Ultima®, Calla™, and Lyra™ ceiling panels.

TechLineSM / 1 877 ARMSTRONG
1 877 276 7876



armstrong.com/suspensionsystem
BPCS-3344-814

LEED® is a registered trademark of the U.S. Green Building Council
All other trademarks used herein are the property of AWI Licensing Company and/or its affiliates
© 2014 AWI Licensing Company • Printed in the United States of America

