



CEILING SYSTEMS

SOUNDSCAPES® Blades™
Linear Design with Acoustical Performance

Armstrong®

SOUNDSCAPES® Blades™

Linear Acoustical Panels

smooth texture



SoundScapes Blades Item 3920, 10" x 46", suspended with Item 7891, 12 gauge hanger wire.

KEY SELECTION ATTRIBUTES

- Excellent acoustical absorption – 1.38 sabins/ft²
- SoundScapes Blades reduce reverberation time in your space
- Colors coordinate with SoundScapes Shapes and Canopies, as well as Infusions Canopies, Lay-in Panels, Partitions, Walls and Wings
- Linear, upscale visual
- Seismic tested
- Integrated hardware – installs from a standard suspension system or individual suspension
- For more information about custom colors, contact Architectural Specialties at 1 877 ARMSTRONG, select options 1-1-4



Visit Armstrong.com Photo Gallery to view more installation photos

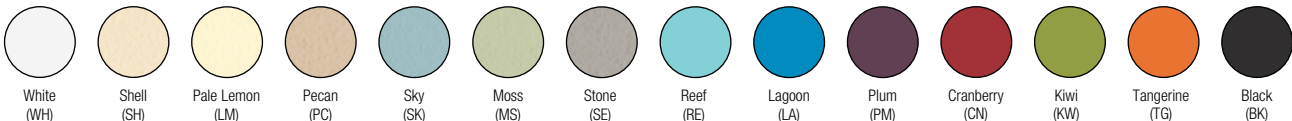
SEARCH: soundscapes blades

VISUAL SELECTION Shown in elevation view

PERFORMANCE Dots represent high level of performance.

| Item Number | Description | Dimensions (Inches) | Diagram | Light Reflect | Fire Rating | Anti-Microbial | Sag Resist | Durability | | | | Recycle |
|-------------|----------------|---------------------|---------|---------------|-------------|----------------|------------|------------|---|---|---|---------|
| | | | | ● | ● | ● | ● | ● | ● | ● | ● | ● |
| 3920_ _ | Vertical Blade | 10 x 46 x 2" | | 0.90 ● | Class A | Inherent ● | ● | ● | ● | ● | ● | ● |
| 3921_ _ | Vertical Blade | 10 x 94 x 2" | | 0.90 ● | Class A | Inherent ● | ● | ● | ● | ● | ● | ● |
| 3922_ _ | Vertical Blade | 22 x 46 x 2" | | 0.90 ● | Class A | Inherent ● | ● | ● | ● | ● | ● | ● |
| 3923_ _ | Vertical Blade | 22" x 94" x 2" | | 0.90 ● | Class A | Inherent ● | ● | ● | ● | ● | ● | ● |

COLOR SELECTION Due to printing limitations, shade may vary from actual product.



Custom colors are available with a Sherwin-Williams® 4-digit color code from the Duration or Harmony flat interior paint families (Code SW _ _ _ _)

SOUNDSCAPES® Blades™

Linear Acoustical Panels

smooth texture

UP TO **71%** RECYCLED CONTENT

LEED®

- acoustics
- energy
- daylight & views
- indoor air quality
- renewable materials
- recycled content
- waste mgmt
- local materials

Calculate LEED contribution at armstrong.com/greengenie

*LOCATION DEPENDENT

INSTALLATION OPTIONS



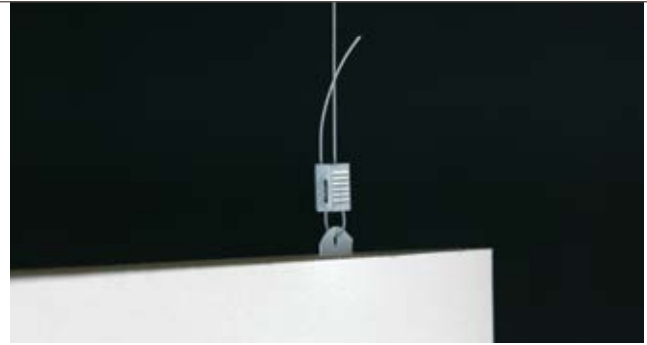
Group Suspension

| Item No. | Description | Lin Ft/Carton |
|---|-------------------|---------------|
| PRELUDE® XL® 360° Painted (Black or White) | | |
| 730136 | HD Main Beam | 240 |
| XL734036 | 48" Cross Tee | 240 |
| XL732036 | 24" Cross Tee | 120 |
| 780036 | 7/8" Wall Angle | 360 |
| 360° PAINTED Made-to-order colors | | |
| 56418 | 144" HD Main Beam | 240 |
| 56421 | 48" Cross Tee | 240 |
| 56419 | 24" Cross Tee | 120 |
| 7800 | 7/8" Wall Angle | 360 |

360° painted grid suspension system available in RAL colors




RAL Colors

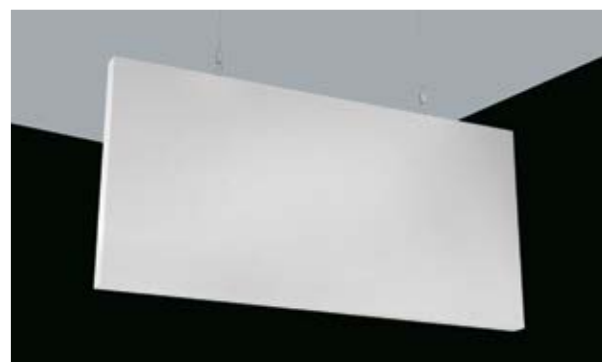


Individual Suspension

| Item No. | Description | Length | Pieces/Carton |
|-----------------------|----------------------------|--------|---------------|
| AIRCRAFT CABLE | | | |
| AC1210 | #12 Aircraft Cable | 120" | 1 cable/ctn |
| AC1215 | #12 Aircraft Cable | 180" | 1 cable/ctn |
| AC1220 | #12 Aircraft Cable | 240" | 1 cable/ctn |
| ACHC | Height Adjustable Hardware | | 1 pc/ctn |
| STANDARD WIRE | | | |
| 7891 | 12 Gauge Soft Hanger Wire | 144" | 140 pcs/ctn |

ACCESSORIES

| Item No. | Description | Pieces/Carton |
|--|-------------------------|---------------|
|  BERC2 | Beam End Retaining Clip | 200 pcs/ctn |



See SoundScapes Blades installation instructions BPLA-297844 for details.



BAFFLES / BLADES

SOUNDSCAPES® Blades™

Excellent Acoustical Performance

Calculate the acoustical difference that SoundScapes Blades can make with our online Reverberation Calculator Tool at armstrong.com/reverbtool

SOUND ABSORPTION IN SABIN

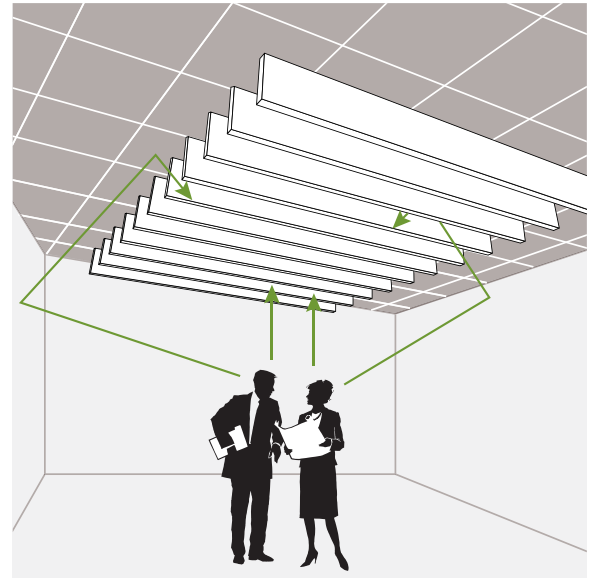
The sabin is the unit of total sound absorption provided by a "space absorber" such as a cloud, canopy, blade, or baffle installed within an architectural space.

Acoustical absorption for a continuous suspended ceiling is calculated by multiplying the area by the material NRC while "space absorbers" are directly measured in sabins. SoundScapes Blades provide greater sound absorption than a continuous ceiling of the same surface area because the sound is absorbed from the front, back, and sides.

The installation of blades in a reverberant space can significantly reduce the background noise and reverberation time, enhancing speech intelligibility.

Factors that may affect acoustical performance are:

- Size and shape of blade
- Number of blades and their layout
- Suspension distance below exposed deck or finished ceiling

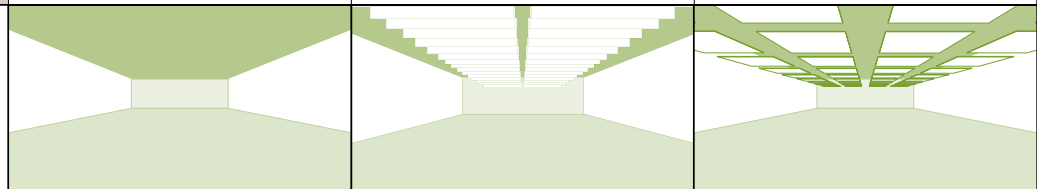


SoundScapes Blades provide 1.38 sabins/ft² in White

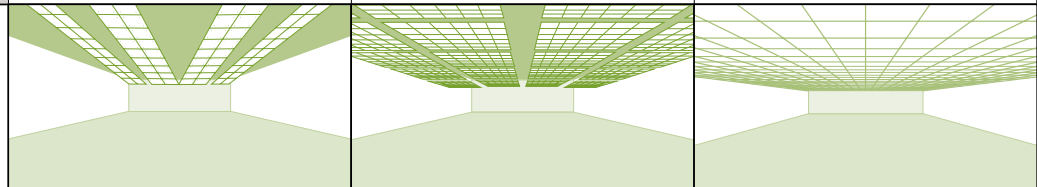
DIFFERENT WAYS OF ADDING SOUND ABSORPTION

5,000 SF office space (100' x 50'), 15' to deck, drywall with windows on two sides, commercial carpet

| Ceiling | No Treatment (0% coverage) | SoundScapes Blades (20% coverage) | SoundScapes Shapes (50% coverage) |
|--------------------------|-------------------------------|--------------------------------------|--------------------------------------|
| | Exposed Structure | 260 Blades: 46" x 22" x 10" | 156 Shapes: 46" x 46" Squares |
| Sabins/SF | 0 | 1.38 | 1.49 |
| Reverberation Time (RT)* | 3.4 sec | 1.0 sec | 0.9 sec |
| RT Improvement | ref | 72% | 73% |
| SPL Reduction (dB)** | ref | -4.0 | -4.5 |



| Ceiling | Optima® Capz™ (50% coverage) | Formations™ Clouds with Optima Panels (50% coverage) | Continuous Optima Ceiling (100% coverage) |
|--------------------------|----------------------------------|---|--|
| | 156 Panels: 48" x 48" Squares | 17 Optima Clouds: 144" x 144" | Suspended 60" below deck |
| NRC | 0.90 | 0.90 | 0.90 |
| Reverberation Time (RT)* | 1.0 sec | 1.0 sec | 0.5 sec |
| RT Improvement | 73% | 72% | 86% |
| SPL Reduction (dB)** | -4.2 | -4.4 | -6.0 |



* Reverberation Time is an average of 500/1000 Hz.

** Sound Pressure Level Reduction is broadband.

NOTE: Results based on acoustical testing of White SoundScapes Blades suspended. The absorption is approximately 10% lower for color panels.

SOUNDSCAPES® Blades™

Linear Acoustical Panels

smooth texture

PHYSICAL DATA

Material

2" thick fiberglass with DuraBrite® scrim on face and sides.

Surface Finish

DuraBrite with factory-applied paint on face and sides. Standard White has energy-saving, high light-reflective finish (LR 0.90). Top of panel is unfinished with embedded hanging clips.

Fire Performance

SoundScapes Blades panel material is ASTM E84 Class A: Flame Spread 25 or under and Smoke Developed 50 or less.

SoundScapes Blades, as with other architectural features located in the ceiling plane, may obstruct or skew the existing or planned fire sprinkler water distribution pattern, or possibly delay the activation of the fire sprinkler or fire detection system. Consult a fire protection engineer, NFPA 13, and local codes for guidance on the proper installation techniques where fire detection or suppression systems are present.

Acoustical Performance

1.38 Sabins per square foot or 64% more sound absorption than the same square footage of NRC 0.90 continuous ceilings. Color Blades have slightly reduced acoustical performance.

Design Considerations

SoundScapes Blades maintain a natural bow that may be noticeable when installed 2" or less apart. Deflection up to 1/8" has been documented in some cases.

Special care in installation and handling must be taken with color blades to avoid surface damage to the paint finish. Custom colors are available with a Sherwin-Williams® color code from the Duration or Harmony flat interior paint families (Code SW _ _ _ _).

Seismic Restraint*

Refer to ASCE 7-10 for seismic requirements.

Recommended Suspension Systems

SoundScapes Blades are pre-assembled with metal hanging clips in the top of the panels. See Installation Instructions BPLA-297844 for installation details.

Warranty

Warranty details at armstrong.com/warranty

Panels/ Carton

4

Panel Weight

1.00 lbs/SF

Minimum Order Quantity

1 carton



SoundScapes Blades square edge detail

armstrong.com/soundscapesblades

- Contacts
- Online catalog, submittal pages, and CAD details
- Literature and sample information
- Installation instructions
- Installation video
- Acoustical case study

1 877 ARMSTRONG (276-7876)

- Name of your Armstrong Representative
- TechLine – Technical information, detail drawings, CAD design assistance, installation information, other technical services – 8 a.m. to 5:30 p.m. EST, Monday through Friday, FAX 1-800-572-8324 or email: techline@armstrong.com
- Product literature and samples
- Custom colors available. Please contact Architectural Specialties for more information: 877-ARMSTRONG and select prompts 1-1-4.



Scan to learn more about SoundScapes Blades.

LEED® is a registered trademark of the U.S. Green Building Council
Sherwin-Williams® is a registered trademark of The Sherwin-Williams Company
All other trademarks used herein are the property of AWI Licensing Company and/or its affiliates
© 2014 AWI Licensing Company • Printed in the United States of America



TechLine™ / 1 877 ARMSTRONG

1 877 276 7876

armstrong.com/soundscapesblades

BPCS-4535-714

On the cover: SoundScapes Blades Item 3920 suspended with Item 7891,
12 gauge hanger wire;
Family Safety Center, Memphis, TN; Designed by Archimania, Memphis, TN

